



Producer Portal by Ever.Ag

Providing Producers the Portal Experience They Deserve

Once a technology afterthought, an upgraded Producer Portal is an easy way to better producer relations, improve communications, and give dairy farmers the information they need to make decisions on the farm.



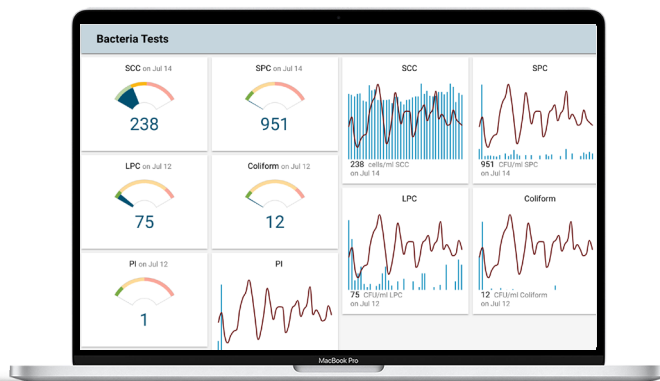
HOW IT WORKS

Producer Portals have been around for a while. A very rudimentary application to hunt down test results, pay statements and news. Now think about that Producer Portal with all the bells and whistles of what you come to expect from online banking applications.

Today's Producer Portal displays information in a modern, mobile-friendly, easy-to-navigate dashboard. Of course, all the "basics" are there, including pay statements, test results, load weights, and updates.

However, the power now comes by way of allowing the producers access to key information in meaningful views. Data streams are easily sorted, compared to past years and exportable. Farms with multiple herds can use one portal to "see" results from all dairies.

Producers can share portal access – and customize what is seen – with their employees and advisors through user-based permissions. Additionally, the dashboard can be branded with the cooperative or processor's unique branding and color scheme, as well as embedded on their domain URL. Thus, the portal becomes a natural and seamless extension of the producer's everyday workflow.



Producer Portal

OVERVIEW BROCHURE



RESULTS

Producer Portals are an investment in your producer community. It's an easy way to provide information to producers around the critical operational metrics needed to manage the farm.

It follows then that a more meaningful portal experience boosts the producer experience and therefore supports retention efforts. Additionally, providing information to dairy farmers more quickly and in a more consumable form ostensibly leads to quicker reactions at the farm level to address quality issues, production challenges, or changes in components.



FACTS AND FIGURES

99.9%

uptime guarantee

27

configurable data cards

42%

of Total US Milk
Production served



KEY BENEFITS

- Transform key herd metrics into actionable insights
- Accelerate the journey from data to outcomes
- Monitor and review data trends to pinpoint problems
- Access paycheck stubs and payment history
- Send alerts to key personnel when data deviates

MILK+ BY EVER.AG

Producer Payroll is part of the Milk+ by Ever.Ag platform for farm to plant logistics.

[LEARN MORE](#)

IF YOU ARE INTERESTED IN LEARNING
MORE, PLEASE CONTACT US.

[SPEAK TO AN EXPERT](#)



Ever.Ag Connections@Ever.Ag

© 2022 Ever.Ag CONFIDENTIAL & PROPRIETARY